

OVER **100**  
YEARS  
AUTOMOTIVE HISTORY



## The new Škoda Superb

Recommended Retail Price List  
and Technical Specification

Effective 1st April - 30th June 2009



Škoda. Manufacturer of happy drivers.

# Welcome to the New Superb

If you've ever wondered what luxury looks and feels like, without having to give up your arm and your leg, then here it is; the Superb. Why not take a minute to understand exactly how the Superb can make you a happy driver?

## A car with history

The new Superb was launched in September 2008. However, this is a model with history. Since the 1930s, on and off, there's been a Superb in the Škoda range providing a high quality and outstanding drive. So with that much history, it's no wonder that the new Superb has built upon the experiences of its predecessors to deliver a rewarding ownership and driving experience and ensure that Škoda really is the manufacturer of happy drivers.

## Safety

The Superb offers a raft of active and passive safety features to help keep you safe. Active safety includes ESP across the range, activation of warning lights during heavy braking, and disc breaks on all wheels ensuring stopping distance is minimised. Passive features include the use of high-strength materials ensuring high body rigidity, strengthening of the side doors to maximise occupant safety, two Isofix child seats in the rear, and 7 airbags as standard.

## Twindoor

Twindoor is Škoda's revolutionary boot opening mechanism which allows the boot to be opened in two different ways; as a hatch or as a saloon at the simplest touch of a button. This gives you great versatility and more practicality compared to a standard hatchback or saloon car.

## Škoda Assistance

Every Škoda is covered by Škoda Roadside Assistance. So if you break down, even if you're on holiday or on business in Europe, you can use the freephone number to call someone to come and help you. Best of all it's completely free for 3 years.

## Incredible space

The Superb has an enormous 565 litres of usable space in the boot. With the seats down, the Superb offers an astonishing 1,670 litres of space.

Passengers benefit from enormous amounts of legroom, more than even an S Class Mercedes.

## Park assist

Optional on all Superbs, park assist is an innovative system that uses a set of ultrasonic sensors placed at various points around the car to judge the suitability of parking space before assisting in the parking manoeuvre itself.



So you've read a little about some of the New Superb's features, but what else do you need to know about the New Superb?

The Superb is a car with history dating from the 1930s. The original Superb's design was luxurious and elegant both inside and out, built to appeal to the world's leaders and royalty. New Superb takes its sumptuous design cues from its earliest predecessor and builds on these strengths.

The Škoda design philosophy is to produce cars offering the best of both worlds – world class engines, smooth transmissions and high specifications, wrapped in distinctive, elegant and practical bodies.

The New Superb takes this philosophy and develops it. It's the first car ever to have a boot which can be opened as a hatch or a saloon. It has more rear legroom than prestige chauffeur cars, and some nifty technological advances such as AFS (adaptive front light system), touch screen technology and park assist.

The New Superb range is also joined by the frugal Superb GreenLine, with emissions of just 136g/km meaning that luxury needn't cost the earth.

So now the introduction's over, why not have a look at the New Superb in a little more detail.

## Škoda really does manufacture happy drivers.

What does being a happy driver mean to you? Here at Škoda, our goal is to ensure that anyone who experiences a Škoda has a happy experience. Right from the design stage, through the buying experience, to the after sales service, we want our customers to be happy with their Škoda vehicle.

The happiness of our customers is central to all we do here at Škoda, and that's no empty claim - we've been in the top 5 of the JD Power customer satisfaction survey for the last 13 years! Don't take our word for it though, come into a showroom and experience this for yourself.

Škoda. Manufacturer of happy drivers.



## Škoda Superb S

Hatchback	CO <sub>2</sub> (g/km)	VED Band**	Insurance Group	Recommended Basic	VAT	RRP	Recommended OTR*
TSI 125bhp 6spd	157	G	7E	€13,260.87	€1,989.13	€15,250.00	€15,905.00
1.8 TSI 160bhp 6spd	179	I	11E	€14,173.91	€2,126.09	€16,300.00	€16,980.00
1.8 TSI 160bhp 7spd DSG	168	H	11E	€15,260.87	€2,289.13	€17,550.00	€18,230.00
1.9 TDI PD 105bhp 5spd	150	F	6E	€13,660.87	€2,049.13	€15,710.00	€16,340.00
2.0 TDI PD 140bhp 6spd DPF	155	G	8E	€14,573.91	€2,186.09	€16,760.00	€17,415.00
2.0 TDI PD 140bhp 6spd DSG DPF	177	I	8E	€15,660.87	€2,349.13	€18,010.00	€18,690.00

### Standard Equipment

12V Socket in mid console and boot	Electrically adjustable body coloured door mirrors (with integrated indicators)	Pollen filter
16" 'Spectrum' alloys (7J x 16" 205/55 R16 94V)	Electromechanical speed dependent power steering	Radio 'Swing' 2 DIN with single CD (can play MP3 recordings)
2 folding hooks in boot	Electronic engine immobilizer	Rear seatbelts with pre-tensioners
3 headrests rear, height adjustable	ESP incl. ABS+MSR+ASR+EDL+HBA	Remote central locking
3.5mm Aux socket	Front aero windscreen wipers	Removable parcel shelf
4-spoke steering wheel	Front armrest	Side airbags front
8 loudspeakers	Front fog lights	Speed warning indicator
Adjustable instrument illumination	Front headrests, height adjustable	Split folding rear seats
Air conditioned glovebox	Fuel supply cut-off (in event of accident)	Storage box under passenger seat
Alarm with interior monitoring and tilt sensor	Full size steel spare wheel	Storage pockets on rear of front seats
Body coloured bumpers	Gas strut for engine cover	Ticket holder on A-pillar
Body coloured door handles	Halogen headlights with DE module	Tinted glass with grey band
'Catvision' diffused interior illumination	Height adjustable driver and front passenger seats with lumbar support.	Trip computer
Chrome ledge on rear doors	Hill hold control (1.8 TSI 160bhp DSG)	'Twindoor' (boot can be opened as a saloon or as a hatch)
Curtain airbags	Interior door handle illumination	Vanity mirror with illumination, driver and passenger
Cup holders in the mid-console	ISOFIX (2 outer rear seats)	Ventilation outlets in B pillar
Door open indicator	Light Assistant (coming home and tunnel light)	Warning triangle in luggage space
Driver and passenger front airbags	Luggage space illumination	
Driver and passenger seat belt warning buzzer	Manual air-conditioning	
Driver's knee airbag	Passenger airbag switch-off	
Electric windows (front and rear) with child safety system		



## Škoda Superb GreenLine

Hatchback	CO <sub>2</sub> (g/km)	VED Band**	Insurance Group	Recommended Basic	VAT	RRP	Recommended OTR*
1.9 TDI PD 105bhp DPF	136	E	7E	£14,343.48	£2,151.52	£16,495.00	£17,120.00

### Standard Equipment (over S)

16" 'Spectrum' alloys (7J x 16" 205/55 R16 91H)  
 4-Spoke leather steering wheel and small leather pack  
 Chrome window surrounds  
 Cruise control  
 Decorative metallic inlays

Lowered suspension (lowered by 15mm)  
 Small rear boot spoiler  
 Sunset glass (from B pillar back)  
 Tyre repair kit (no spare wheel)  
 Umbrella in rear door

OTR (Recommended On The Road)

\* Recommended 'On the Road' prices include delivery, 12 months Road Fund Licence, DVLA First registration Fee (at £55), and apply to the United Kingdom only.

VED (Vehicle Excise Duty)

\*\* All vehicles will be subject to Vehicle Excise Duty based on the fuel type of the vehicle and its carbon dioxide (CO<sub>2</sub>) emissions level, measured in grams per kilometre (g/km). Due to changes in vehicle emissions data, CO<sub>2</sub> figures may differ on these vehicles if taken from current Škoda UK stock. The VED bands are shown in the table opposite.

Please confirm figures with your Škoda retailer. Edition: UK May 2009. VAT is calculated at 15%. For fuel consumption data, please refer to page 14. ◊ Includes cars emitting over 225g/km registered between 1st March 2001 and 23rd March 2006.

The VED bands listed are applicable from May 1 2009, in accordance with the guidance provided by the DVLA in February 2009. Prior to May registrations, the VED bands will be different, and as a consequence the Recommended OTR figure may be different from that listed above. Please ask your retailer for further details.

Band	CO <sub>2</sub> Emission figure (g/km)	VED charge
A	Up to 100	£0
B	101-110	£35
C	111-120	£35
D	121-130	£120
E	131-140	£120
F	141-150	£125
G	151-165	£150
H	166-175	£175
I	176-185	£175
J	186-200	£215
K◊	201-225	£215
L	226-255	£405
M	Over 255	£405



## Škoda Superb SE

Hatchback	CO <sub>2</sub> (g/km)	VED Band**	Insurance Group	Recommended Basic	VAT	RRP	Recommended OTR*
1.8 TSI 160bhp 6spd	179	I	12E	£15,869.57	£2,380.43	£18,250.00	£18,930.00
1.8 TSI 160bhp 7spd DSG	168	H	12E	£16,956.52	£2,543.48	£19,500.00	£20,180.00
1.8 TSI 4x4 160bhp 6spd	189	J	12E	£17,086.96	£2,563.04	£19,650.00	£20,370.00
1.9 TDI PD 105bhp 5spd	150	F	7E	£15,356.52	£2,303.48	£17,660.00	£18,290.00
2.0 TDI PD 140bhp 6spd DPF	155	G	9E	£16,269.57	£2,440.43	£18,710.00	£19,365.00
2.0 TDI PD 140bhp 6spd DSG DPF	177	I	9E	£17,356.52	£2,603.48	£19,960.00	£20,640.00
2.0 TDI CR 170bhp 6spd DPF	153	G	12E	£17,052.17	£2,557.83	£19,610.00	£20,265.00
2.0 TDI CR 170bhp 6spd DSG DPF	159	G	12E	£18,139.13	£2,720.87	£20,860.00	£21,515.00
2.0 TDI CR 4x4 170bhp 6spd DPF	168	H	13E	£18,269.57	£2,740.43	£21,010.00	£21,690.00

### Standard Equipment (over S)

17" 'Trifid' alloys  
(7.5J x 17" 225/45 R17 94 W/Y)  
4 Spoke leather multi-function steering wheel (for radio)  
Acoustic rear parking sensors  
Alcantara upholstery (alcantara inner seat, artificial leather outer seat)  
Boarding spots (under door mirrors)  
Chrome trim on lower boot  
Chrome window surrounds

Cruise control  
Decorative metal inserts on dashboard  
Dual-zone air conditioning  
Electrically folding door mirrors (after locking of car)  
Front fog lights with cornering function  
Glasses storage case  
Height adjustable front armrest  
Lower grille chrome surround  
Maxi-dot trip computer

Net on mid console  
Pollen and dust filter with sensor  
Radio 'Bolero' 2 DIN touchscreen with integrated 6CD changer, SD card slot, aux in socket (can play MP3 recordings)  
Small leather pack (steering wheel, gearknob and gaiter)  
Space saver spare wheel  
Umbrella in rear door

# Škoda Superb Elegance

Hatchback	CO <sub>2</sub> (g/km)	VED Band**	Insurance Group	Recommended Basic	VAT	RRP	Recommended OTR*
1.8 TSI 160bhp 6spd	179	I	12E	£17,973.91	£2,696.09	£20,670.00	£21,350.00
1.8 TSI 160bhp 7spd DSG	168	H	12E	£19,060.87	£2,859.13	£21,920.00	£22,600.00
1.8 TSI 4x4 160bhp 6spd	189	J	12E	£19,191.30	£2,878.70	£22,070.00	£22,790.00
3.6 V6 4x4 260bhp 6spd DSG	235	L	15E	£22,586.96	£3,388.04	£25,975.00	£26,885.00
2.0 TDI PD 140bhp 6spd DPF	155	G	10E	£18,373.91	£2,756.09	£21,130.00	£21,785.00
2.0 TDI PD 140bhp 6spd DSG DPF	177	I	10E	£19,460.87	£2,919.13	£22,380.00	£23,060.00
2.0 TDI CR 170bhp 6spd DPF	153	G	13E	£19,156.52	£2,873.48	£22,030.00	£22,685.00
2.0 TDI CR 170bhp 6spd DSG DPF	159	G	13E	£20,243.48	£3,036.52	£23,280.00	£23,935.00
2.0 TDI CR 4x4 170bhp 6spd DPF	168	H	13E	£20,373.91	£3,056.09	£23,430.00	£24,110.00

## Standard Equipment (over SE)

18" 'Themisto' alloys  
(7.5J x 18" 225/40 R18 92Y)

4 Spoke leather multi-function steering wheel  
(inc controls for radio and telephone)

Bi-Xenon lights with AFS  
(Adaptive Front-light System)

'Columbus' colour touchscreen satellite navigation  
system with SD card, MP3 and 3.5mm aux in socket  
(no 6CD autochanger)

Electrically adjustable front seats,  
driver's seat with memory  
(no storage box under passenger seat)  
Full leather upholstery  
Headlight washers  
Heated front seats  
Hill hold control (3.6 V6 and 1.8 TSI DSG only)

Premium GSM III telephone preparation  
with Bluetooth® (UHV and rSAP)<sup>†</sup>  
Protective chrome side mouldings  
Rain sensor  
Rear mechanical sunblind  
TPM (Tyre Pressure Monitor)

<sup>†</sup> Please see list of compatible phones on page 18

OTR (Recommended On The Road)

\* Recommended 'On the Road' prices include delivery, 12 months Road Fund Licence, DVLA First registration Fee (at £55), and apply to the United Kingdom only.

VED (Vehicle Excise Duty)

\*\* All vehicles will be subject to Vehicle Excise Duty based on the fuel type of the vehicle and its carbon dioxide (CO<sub>2</sub>) emissions level, measured in grams per kilometre (g/km). Due to changes in vehicle emissions data, CO<sub>2</sub> figures may differ on these vehicles if taken from current Škoda UK stock. The VED bands are shown in the table opposite.

Please confirm figures with your Škoda retailer. Edition: UK May 2009. VAT is calculated at 15%. For fuel consumption data, please refer to page 14. ◊ Includes cars emitting over 225g/km registered between 1st March 2001 and 23rd March 2006.

The VED bands listed are applicable from May 1 2009, in accordance with the guidance provided by the DVLA in February 2009. Prior to May registrations, the VED bands will be different, and as a consequence the Recommended OTR figure may be different from that listed above. Please ask your retailer for further details.

Band	CO <sub>2</sub> Emission figure (g/km)	VED charge
A	Up to 100	£0
B	101-110	£35
C	111-120	£35
D	121-130	£120
E	131-140	£120
F	141-150	£125
G	151-165	£150
H	166-175	£175
I	176-185	£175
J	186-200	£215
K ◊	201-225	£215
L	226-255	£405
M	Over 255	£405



## Factory Fitted Optional Equipment

Available on all models	Basic	VAT	RRP
Electric slide and tilt sunroof (not available on GreenLine)	£513.04	£76.96	£590.00
Electric sliding solar sunroof (not available on GreenLine)	£682.61	£102.39	£785.00
Floor mats	£43.48	£6.52	£50.00
Metallic paint	£347.83	£52.17	£400.00
Net in boot	£65.22	£9.78	£75.00
Rear side airbags	£213.04	£31.96	£245.00
Smoking pack	£26.09	£3.91	£30.00
Sunset glass from b-pillar back (standard on GreenLine)	£178.26	£26.74	£205.00
Towbar preparation (not available on GreenLine)	£113.04	£16.96	£130.00
Variable boot floor (not available on GreenLine)	£139.13	£20.87	£160.00

### Available on S models

3-Spoke leather steering wheel with leather gearknob and gaiter	£213.04	£31.96	£245.00
4-Spoke leather steering wheel with leather gearknob and gaiter	£213.04	£31.96	£245.00
4-Spoke multi-function steering wheel for radio and telephone with leather gearknob and gaiter + Telephone preparation with Bluetooth® GSM III (UHV + rSAP) and Maxi-dot	£740.43	£111.06	£855.00
4-Spoke multi-function steering wheel for radio with leather gearknob and gaiter	£317.39	£47.61	£365.00
17" 'Callisto' alloys 7.5J x 17"	£530.43	£79.57	£610.00
17" 'Trifid' alloys 7.5J x 17"	£530.43	£79.57	£610.00
Acoustic front and rear parking sensors	£495.65	£74.35	£570.00
Acoustic rear parking sensors	£256.52	£38.48	£295.00
'Bolero' touchscreen stereo with integrated CD changer (6CD) with MP3 and SD card	£256.52	£38.48	£295.00
CD changer (6CD)	£278.26	£41.74	£320.00
Cruise control	£160.87	£24.13	£185.00
Dual-zone air conditioning	£404.35	£60.65	£465.00
Heated front and rear seats (separately controlled)	£278.26	£41.74	£320.00
Hill hold control (for ESP) and TPM (Tyre Pressure Monitor)	£130.43	£19.57	£150.00
Integrated front headlight washers	£113.04	£16.96	£130.00
Maxi-dot trip computer	£104.35	£15.65	£120.00
Park Assist (front & rear parking sensors and Maxi-dot)	£539.13	£80.87	£620.00
Rain sensor	£130.43	£19.57	£150.00
Rear and rear side window sunscreens (manually operated)	£173.91	£26.09	£200.00
Rear side window sunscreens (manually operated)	£108.70	£16.30	£125.00
Rear window sunscreen (manually operated)	£86.96	£13.04	£100.00
TPM (Tyre Pressure Monitor)	£86.96	£13.04	£100.00

### Available on GreenLine models

3-Spoke leather steering wheel with leather gearknob and gaiter	FOC	FOC	FOC
4-Spoke multi-function steering wheel for radio and telephone with leather gearknob and gaiter + Telephone preparation with Bluetooth® GSM III (UHV + rSAP) and Maxi-dot	£421.74	£63.26	£485.00
4-Spoke multi-function steering wheel for radio with leather gearknob and gaiter	£104.35	£15.65	£120.00
Acoustic front and rear parking sensors	£495.65	£74.35	£570.00
Acoustic rear parking sensors	£256.52	£38.48	£295.00
'Bolero' touchscreen stereo with integrated CD changer (6CD) with MP3 and SD card	£256.52	£38.48	£295.00
'Columbus' colour satellite navigation system with TMC*	£1,108.70	£166.30	£1,275.00
Dual-zone air conditioning	£404.35	£60.65	£465.00
Heated front and rear seats (separately controlled)	£278.26	£41.74	£320.00

\* TMC (Traffic Message Channel) - alerts the driver to traffic problems on major roads and enables optional re-routing

#### Available on GreenLine models continued

	Basic	VAT	RRP
Heated front seats	£147.83	£22.17	£170.00
Hill hold control (for ESP) and TPM (Tyre Pressure Monitor)	£130.43	£19.57	£150.00
Integrated front headlight washers	£113.04	£16.96	£130.00
Maxi-dot trip computer	£104.35	£15.65	£120.00
Rain sensor	£130.43	£19.57	£150.00
Park assist (includes front and rear sensors and Maxi-dot)	£539.13	£80.87	£620.00
TPM (Tyre Pressure Monitor)	£86.96	£13.04	£100.00

#### Available on SE models

3-Spoke multi-function steering wheel for radio and telephone with paddles for DSG and with leather gearknob and gaiter + Telephone preparation with Bluetooth® GSM III (UHV + rSAP)	£560.87	£84.13	£645.00
3-Spoke multi-function steering wheel for radio with paddles for DSG and with leather gearknob and gaiter	£239.13	£35.87	£275.00
4-Spoke multi-function steering wheel for radio and telephone with leather gearknob and gaiter + Telephone preparation with Bluetooth® GSM III (UHV + rSAP)	£321.74	£48.26	£370.00
17" 'Callisto' alloys 7.5J x 17"	FOC	FOC	FOC
18" 'Luna' alloys 7.5J x 18"	£426.09	£63.91	£490.00
Auto dimming rear view mirror	£43.48	£6.52	£50.00
Acoustic front parking sensors	£239.13	£35.87	£275.00
'Columbus' colour satellite navigation system with TMC *	£1,108.70	£166.30	£1,275.00
Full leather upholstery (leather and artificial leather)	£1,108.70	£166.30	£1,275.00
Heated front and rear seats (separately controlled)	£278.26	£41.74	£320.00
Heated washer nozzles	£26.09	£3.91	£30.00
Hill hold control (for ESP) and TPM (Tyre Pressure Monitor)	£130.43	£19.57	£150.00
Integrated front headlight washers	£113.04	£16.96	£130.00
Park assist (includes front and rear parking sensors and Maxi-dot)	£300.00	£45.00	£345.00
Rain sensor	£130.43	£19.57	£150.00
Rear and rear side window sunscreens (manually operated)	£173.91	£26.09	£200.00
Rear side window sunscreens (manually operated)	£108.70	£16.30	£125.00
Rear window sunscreen (manually operated)	£86.96	£13.04	£100.00
TPM (Tyre Pressure Monitor)	£86.96	£13.04	£100.00
Upgraded soundsystem (10 speakers)	£256.52	£38.48	£295.00
Wood décor	£104.35	£15.65	£120.00

#### Available on Elegance models

3-Spoke multi-function steering wheel for radio and telephone with paddles for DSG and with leather gearknob and gaiter	£300.00	£45.00	£345.00
18" 'Luna' alloys 7.5J x 18"	FOC	FOC	FOC
Acoustic front parking sensors	£239.13	£35.87	£275.00
Auto dimming rear view mirror	£43.48	£6.52	£50.00
CD changer (6CD)	£278.26	£41.74	£320.00
Heated front and rear seats (separately controlled)	£152.17	£22.83	£175.00
Heated washer nozzles	£26.09	£3.91	£30.00
Hill hold control (for ESP)	£86.96	£13.04	£100.00
Park assist (includes front and rear parking sensors and Maxi-dot)	£300.00	£45.00	£345.00
Rear side window sunscreens (manually operated)	£108.70	£16.30	£125.00
Upgraded soundsystem (10 speakers)	£256.52	£38.48	£295.00
Wood décor	£104.35	£15.65	£120.00

- |  |  |
|--|--|
| 1 Upgraded soundsystem (10 speakers)                       | 6 Net in boot  |
| 2 'Columbus' colour satellite navigation system with TMC * | 7 Electric sliding solar sunroof   |
| 3 Acoustic rear parking sensors                            | 8 Integrated front headlight washers                                     |
| 4 Park Assist  | 9 Rain sensor  |
| 5 4-Spoke multi-function steering wheel                    | 10 'Bolero' stereo with integrated CD changer (6CD) with MP3 and SD card |





## Retailer Supplied Accessories

Available on all models	Part Number	Basic	VAT	RRP
<b>Sport &amp; Design</b>				
Chrome-plated lateral strips	KGA800001	£34.78	£5.22	£40.00
Decorative door sill covers	KDA800002	£64.35	£9.65	£74.00
Front bumper spoiler	FAA800003	£145.22	£21.78	£167.00
Leather gearstick, manual 5 speed, with sleeve	FFA800001	£42.61	£6.39	£49.00
Leather gearstick, manual 6 speed, with sleeve	FFA800002	£42.61	£6.39	£49.00
Leather steering wheel, 3 spokes	FBA800001	£106.96	£16.04	£123.00
Leather steering wheel, 4 spokes	FBA800000	£98.26	£14.74	£113.00
Rear bumper spoiler	FAA800002	£136.52	£20.48	£157.00
Twindoor spoiler	FAA800001	£85.22	£12.78	£98.00
<b>Alloy Wheels</b>				
17" 'Flash' alloy wheel 6.0 x 17" ET45 (Compatible with snowchains CEP800001)	CCX800003	£133.04	£19.96	£153.00
17" 'Laurel' alloy wheel 7.5 x 17" ET49	CCX800002	£133.04	£19.96	£153.00
18" 'Luxon' alloy wheel 7.5 x 18" ET46	CCX800004	£136.52	£20.48	£157.00
<b>Comfort &amp; Protection</b>				
Front mud flaps	KEA800001	£17.39	£2.61	£20.00
Park distance control	BEA800002	£170.43	£25.56	£196.00
Rear mud flaps	KEA800002	£17.39	£2.61	£20.00
Rubber boot mat	DCD800001	£34.78	£5.22	£40.00
Rubber floor mats	DCC800101	£26.09	£3.91	£30.00
Side net - large	DMK800003	£13.04	£1.96	£15.00
Side net - small	DMK800004	£10.43	£1.56	£12.00
Sun blinds - rear side windows	DCK819001	£73.91	£11.09	£85.00
Textile boot mat (Polypropylene)	DCA800002	£26.09	£3.91	£30.00
Textile floor mats (Polyamide)	DCA800103	£39.13	£5.87	£45.00
Textile floor mats (Polypropylene)	DCA800101	£33.04	£4.96	£38.00
Variable net	DMK800002	£13.04	£1.96	£15.00
Vertical net	DMK800001	£13.04	£1.96	£15.00
<b>Transport &amp; Towing</b>				
Electrics for tow bar	EEA800101EL	£136.52	£20.48	£157.00
Electrics for tow bar (for cars with tow bar preparation)	EEA800002EL	£127.83	£19.17	£147.00
Removable tow bar	EEA800001	£200.00	£30.00	£230.00
Spare bulb set - bi-xenon headlights	BDB800002	£17.39	£2.61	£20.00
Spare bulb set - H7 Headlights	BDB800001	£21.74	£3.26	£25.00

- 1 Front bumper spoiler
- 2 Twindoor spoiler
- 3 Decorative door sill covers
- 4 Rear mud flaps
- 5 Sun blinds - rear side windows
- 6 Removable tow bar



## Škoda Superb colours



Amazonian Green metallic  
7R7R



Anthracite Grey metallic  
9J9J



Black Magic pearl effect  
1Z1Z



Brilliant Silver metallic  
8E8E



Candy White  
9P9P



Cappuccino metallic  
4K4K



Mocca metallic  
6Q6Q



Pacific Blue  
Z5Z5



Rosso Brunello metallic  
X7X7



Storm Blue metallic  
8D8D



Steel Grey metallic  
2G2G

Because of errors which may occur in the print, the colours illustrated here may differ from the actual finishes themselves. Your Škoda retailer will be pleased to advise you.

# Škoda Superb trims and wheels

## Superb S

Standard



Onyx cloth upholstery



16" 'Spectrum' alloys

Option



17" 'Trifid' alloys\*



17" 'Callisto' alloys\*

## Superb GreenLine

Standard



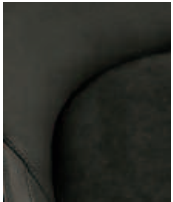
Onyx cloth upholstery



16" 'Spectrum' alloys

## Superb SE

Standard



Onyx Alcantara upholstery



17" 'Trifid' alloys

Option



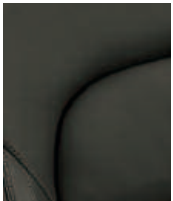
17" 'Callisto' alloys



18" 'Luna' alloys

## Superb Elegance

Standard



Onyx leather upholstery



Ivory leather upholstery

Option



18" 'Themisto' alloys



18" 'Luna' alloys

\* With space saver spare wheel  
Pictures are for illustrative purposes only.  
Please visit your local retailer for further information.

# Engine Specifications

Petrol Engines	1.4 TSI 125bhp	1.8 TSI 160bhp	1.8 TSI 160bhp DSG	1.8 TSI 160bhp 4x4	3.6 V6 260bhp 4x4 DSG
Trim level	S	S/SE/Elegance	S/SE/Elegance	SE/Elegance	Elegance
Type	4-cylinder in-line engine	4-cylinder in-line engine	4-cylinder in-line engine	4-cylinder in-line engine	6-cylinder V-engine
Valves per cylinder	4	4	4	4	4
Engine	Direct injection				
Cubic capacity cc	1,390	1,798	1,798	1,798	3,597
Bore x stroke mm	76.5 x 75.6	82.5 x 84.2	82.5 x 84.2	82.5 x 84.2	89.0 x 96.4
Air pollution regulation	EU IV	EU IV	EU IV	EU IV	EU IV
Compression ratio	10.0:1	9.6:1	9.6:1	9.6:1	11.4:1
<b>Performance</b>					
Max speed mph (km/h)	125 (201)□	137 (220)□	137 (220)□	135 (217)□	155 (250)□
Acceleration 0-62mph	10.5	8.6	8.5	8.7	6.5
Max. performance (Bhp/rpm)	125/5,000	160/5,000 - 6,200	160/4,500 - 6,200	160/4,500 - 6,200	260/6,000
Max. torque (Nm/rpm)	200/1,500 - 4,000	250/1,500 - 4,200	250/1,500 - 4,500	250/1,500 - 4,500	350/2,500 - 5,000
Fuel consumption mpg (l/100km)					
Urban*	31.4 (9)	27.2 (10.4)	30.1 (9.4)	26.6 (10.6)	19.2 (14.7)
Extra Urban*	52.3 (5.4)	47.1 (6)	49.6 (5.7)	42.8 (6.6)	38.2 (7.4)
Combined*	41.5 (6.8)	37.2 (7.6)	39.8 (7.1)	34.9 (8.1)	28.0 (10.1)
CO <sub>2</sub> emissions g/km*	157	179	168	189	235

\* Fuel consumption and CO<sub>2</sub> emissions according to EU Directive 99/94 □ Where law permits.

## Power transmission

### Clutch

**Manual transmission** - hydraulic single

dry clutch disc with membrane spring, asbestos free

**6 spd DSG transmission** - two coaxial wet multiple-disc clutch, electro-hydraulically operated

**7 spd DSG transmission** - two coaxial dry multiple-disc clutch, electro-hydraulically operated

### Transmission

**Manual** - 1.9 TDI PD 105bhp - manual 5-speed fully synchronized TSI 125bhp, 1.8 TSI 160bhp, 1.8 TSI 4x4 160bhp, 2.0 TDI PD 140bhp, 2.0 TDI CR 170bhp, 2.0 TDI CR 4x4 170bhp - manual 6-speed fully synchronized

**DSG automatic** - 3.6 V6 4x4 260bhp, 2.0 TDI PD 140bhp, 2.0 TDI CR 70bhp - automatic 6-speed DSG, with Tiptronic gear changing 1.4 TSI DSG, 1.8 TSI 160bhp - automatic 7-speed DSG, with Tiptronic gear changing

## Chassis

**Front axle/rear axle** - McPherson suspension with lower triangular links and torsion stabiliser/multi-element axle, with one longitudinal and three transverse links, with torsion stabiliser.

**Braking system** - hydraulic dual diagonal circuit braking system vacuum assisted with Dual Rate system

**Front brakes** - Disc brakes with inner cooling, with single/piston floating caliper

**Rear brakes** - Disc brakes

**Steering** - Direct rack and pinion steering with electromechanical power steering

**Turning circle (m)** 10.8m

# Engine Specifications

## Diesel Engines

	1.9 TDI PD 105bhp	1.9 TDI PD 105bhp DPF	2.0 TDI PD 140bhp DPF	2.0 TDI PD 140bhp DSG DPF	2.0 TDI CR 170bhp DPF	2.0 TDI CR 170bhp DSG DPF	2.0 TDI CR 170bhp 4x4 DPF
Trim level	S/SE	GreenLine	S/SE/Elegance	S/SE/Elegance	SE/Elegance	SE/Elegance	SE/Elegance
Type	4-cylinder in-line engine	4-cylinder in-line engine	4-cylinder in-line engine	4-cylinder in-line engine	4-cylinder in-line engine	4-cylinder in-line engine	4-cylinder in-line engine
Valves per cylinder	2	2	2	2	4	4	4
Engine	High pressure direct injection						
Cubic capacity cc	1,896	1,896	1,968	1,968	1,968	1,968	1,968
Bore x stroke mm	79.5 x 95.5	79.5 x 95.5	81.0 x 95.5	81.0 x 95.5	81.0 x 95.5	81.0 x 95.5	81.0 x 95.5
Air pollution regulation	EU IV	EU IV	EU IV	EU IV	EU IV	EU IV	EU IV
Compression ratio	18.5:1	18.5:1	18.5:1	18.5:1	16.5:1	16.5:1	16.5:1

## Performance

Max speed mph (km/h)	118 (190)□	120 (193)□	129 (207)□	127 (205)□	138 (222)□	137 (220)□	136 (219)□
Acceleration 0-62mph	12.5	12.5	10.2	10.2	8.8	8.8	9.0
Max. performance (Bhp/rpm)	105/4,000	105/4,000	140/4,000	140/4,000	170/4,200	170/4,200	170/4,200
Max. torque (Nm/rpm)	250/1,900	250/1,900	320/1,800-2,500	320/1,800-2,500	350/1,750-2,500	350/1,750-2,500	350/1,750-2,500
Fuel consumption mpg (l/100km)							
Urban*	38.7 (7.3)	43.5 (6.5)	37.7 (7.5)	31.7 (8.9)	36.7 (7.7)	36.2 (7.8)	34.0 (8.3)
Extra Urban*	58.9 (4.8)	67.3 (4.2)	56.5 (5.0)	51.4 (5.5)	58.9 (4.8)	55.4 (5.1)	53.3 (5.3)
Combined*	49.6 (5.7)	55.4 (5.1)	47.9 (5.9)	41.5 (6.8)	48.7 (5.8)	46.3 (6.1)	44.1 (6.4)
CO <sub>2</sub> emissions g/km*	150	136	155	177	153	159	168

### Tank

Fuel tank content - 60 litres

Fuel - Lead-free petrol with RON 95 or Lead-free petrol with RON 91<sup>†</sup>.

Body type - 5door, two compartment, 5 seater

Drag coefficient - C<sub>w</sub> 0.30

PD - Pumpe Düse

CR - Common Rail

### Official fuel consumption for the Superb range in mpg (litres/100km):

urban 19.2 (14.7) - 43.5 (6.5);

extra urban 38.2 (7.4) - 67.3 (4.2);

combined 28.0 (10.1) - 55.4 (5.1).

CO<sub>2</sub> range 136-235 g/km

<sup>†</sup> Lower efficiency when using lower RON petrol.

## Measurements and Weights

### Škoda Superb

#### Exterior dimensions (mm)

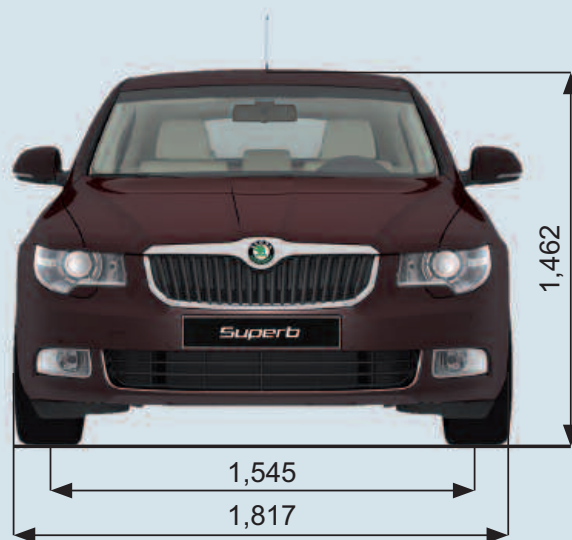
Length (mm)	4,838
Width (mm)	1,817
Height (mm)	1,462 <sup>†</sup>
Height for GreenLine (mm)	1,447 <sup>†</sup>
Wheelbase (mm)	2,761
Track front (mm)	1,545
Track rear (mm)	1,518
Clearance (mm)	139 <sup>†</sup>
Clearance for GreenLine (mm)	123 <sup>†</sup>

#### Luggage storage space (litres)

with rear seat upright	565
with rear seat down	1,670

Figures are for vehicle carrying average load and three passengers.

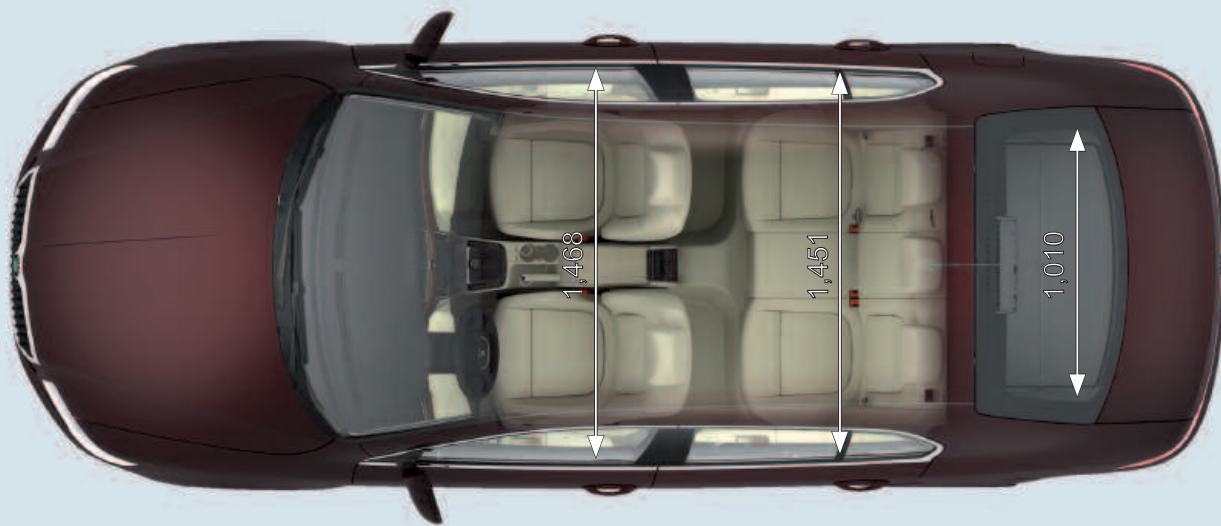
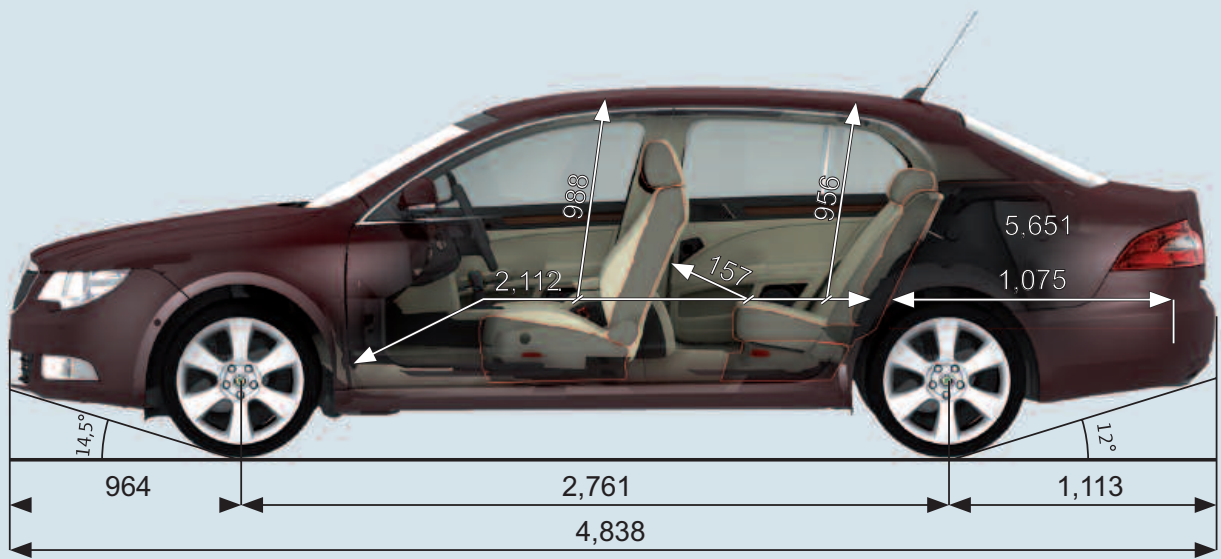
<sup>†</sup> Figures for unloaded vehicle



Petrol	1.4 TSI 125bhp	1.8 TSI 160bhp	1.8 TSI 160bhp DSG	1.8 TSI 160bhp 4x4	3.6 V6 260bhp 4x4 DSG
<b>Weight</b>					
Kerb weight* kg (lbs)	1,425 (3,142)	1,454 (3,206)	1,471 (3,243)	1,550 (3,417)	1,665 (3,671)
Total weight* kg	2,045	2,074	2,091	2,170	2,285
Payload* kg	620	620	620	620	620
Max roof load kg	100	100	100	100	100
Towing unbraked max kg	650	700	700	750	750
Towing braked max kg	1,400	1,500	1,500	1,600	1,800

\* Weight depending on level of equipment

All measurements and weights correct at time of going to print but may be subject to change and may vary according to passengers and load in vehicle



Diesel	1.9 TDI PD 105bhp	1.9 TDI PD 105bhp DPF	2.0 TDI PD 140bhp	2.0 TDI PD 140bhp DSG	2.0 TDI CR 170bhp	2.0 TDI CR 170bhp DSG	2.0 TDI CR 170bhp 4x4
<b>Weight</b>							
Kerb weight* kg (lbs)	1,456 (3,210)	1,443 (3,182)	1,490 (3,285)	1,512 (3,333)	1,498 (3,303)	1,515 (3,340)	1,590 (3,505)
Total weight* kg	2,076	2,063	2,110	2,132	2,118	2,135	2,210
Payload* kg	620	620	620	620	620	620	620
Max roof load kg	100	100	100	100	100	100	100
Towing unbraked max kg	650	650	700	700	750	750	750
Towing braked max kg	1,500	1,500	1,800	1,800	1,800	1,800	1,800

## Technical glossary

**ABS:** the Anti-lock Braking System prevents the wheels from locking during heavy or emergency braking, enabling the vehicle to remain steerable. When braking, wheel speed sensors measure the road wheel speed and should one or more wheels start to lock the system reduces brake pressure to that wheel.

**AFM:** records and assesses all available data about the journey and uses them to optimize the ESP system's reactions, which can thus be adapted to any driving style and the current vehicle payload.

**ASR:** Anti-Slip Regulation traction control ensures the Superb's stability when pulling away or accelerating. If the engine power or torque being transmitted to the drive wheels is too great, for example on a slippery road surface, engine torque is automatically reduced until optimum road-holding returns, thus preventing wheelspin. A light indicates whether the ASR system is on. It can be manually switched off.

**CAN Bus:** the CAN Bus is an electronic data bus which links the various different electronic control systems in the car. It ensures ideal co-ordination between systems and reduces the amount of wiring needed in the car.

**DSR:** Driver Steering Recommendation – in a crisis situation it helps the driver stabilize a skid by making a slight intervention in the steering.

**EBV:** Electronic Brake Variator – ensures optimal brake force distribution between the front and rear axles.

**EDL:** the Electronic Differential Lock continually compares the rpm of the drive wheels, and if it identifies a difference between them which could lead to an individual wheel spinning, for example if the two wheels are on different types of surface or accelerating on wet leaves, the system brakes the wheel affected until uniform rpm of all drive wheels is restored.

**ESBS:** Electronic Stability Brake System – targeted interventions in the braking process improve the handling of a car as it brakes when passing round a bend and keeps it from veering.

**ESP:** Electronic Stability Programme is designed to stabilise the dynamic handling response of the vehicle by counteracting any tendency towards oversteer or understeer. The ESP constantly compares the actual movement of the vehicle with predetermined values and according to the situation ESP reacts by braking each wheel individually (according to direction of slip) and automatically adjusting the engine's output.

**Fuel cut-out:** should one or more of the airbags inflate after an accident, this system automatically cuts out the fuel supply, thus preventing subsequent leakage of the diesel or petrol.

**HBA:** Hydraulic Brake Assistant – speeds up the brake effect in cases of hard braking.

**MBA:** the Mechanical Brake Assist system increases brake effort under emergency braking conditions through a dual rate servo.

**MSR:** the engine torque control system recognises when the wheels are subject to too much slippage and regulates the power supply by intervening in the engine management system. This prevents wheelspin when, for example, changing down on a smooth or wet road surface. MSR is a constituent part of the ASR system.

**Trip Computer:** the trip computer not only features an impressive range of data displays, operating it is simplicity itself. A multifunction touch key enables you to call up all relevant data on the easy-to-read display. Features include external temperature, time, current fuel consumption, average fuel consumption, miles driven and average speed.

**Xenon lights:** the Xenon lights produce about 2.5 times the light of standard Halogen lights with 35% less energy consumption.

**DPF:** diesel particulate filter is part of the exhaust system responsible for cleaning the engine exhaust gases before they enter the atmosphere. The DPF catches soot particles emitted in the exhaust gas and it works in conjunction with the catalytic converter, which reduces the amount of harmful gases entering the atmosphere. The DPF must periodically be emptied of the soot particles, a process known as regeneration. This involves elevated exhaust system temperatures. A driving style is required during regeneration, where a constant vehicle speed above 37 mph must be maintained. This does not always suit customers who make frequent short journeys or experience stop/start driving or drive within inner-city or urban areas.

### Mobile phones compatible with the Bluetooth® system

Nokia N71	Nokia E65	Nokia 6103	Nokia 6290	Nokia 9300i	Siemens S75
Nokia N72	Nokia E70	Nokia 6110 Navigator	Nokia 6300	Nokia 9500 (SW>5.22)	Siemens SL75
Nokia N73	Nokia E90	Nokia 6111	Nokia 6500 classic		Siemens SXG75
Nokia N76	Nokia 2630	Nokia 6120 classic	Nokia 6500 slide	Vertu Ascent	
Nokia N77	Nokia 2760	Nokia 6121 classic	Nokia 6810		Benq-Siemens S68
Nokia N80	Nokia 3109 classic	Nokia 6125	Nokia 6820	Philips 768	Benq-Siemens E71
Nokia N81	Nokia 3110 classic	Nokia 6131	Nokia 6822	Philips 960	Benq-Siemens EL71
Nokia N91	Nokia 3250 XpressMusic	Nokia 6151	Nokia 7360		Benq-Siemens C81
Nokia N92	Nokia 3500 classic	Nokia 6230	Nokia 7370	Samsung SGH-U700	Benq-Siemens M81
Nokia N93	Nokia 5200	Nokia 6230i	Nokia 7373	Samsung SGU-U760	
Nokia N93i	Nokia 5300 XpressMusic	Nokia 6233	Nokia 7390		
Nokia N95	Nokia 5500 Sport	Nokia 6234	Nokia 7500 Prism	Siemens S65	
Nokia E50	Nokia 5700 XpressMusic	Nokia 6267	Nokia 7900 Prism	Siemens CX75	
Nokia E60	Nokia 6021	Nokia 6270	Nokia 8600 Luna	Siemens SK65	
Nokia E61	Nokia 6085	Nokia 6280	Nokia 8800	Siemens M75	
Nokia E61i	Nokia 6086	Nokia 6288	Nokia 9300	Siemens SP65	

Mobile phones on the '3' network are incompatible with the Bluetooth® phone preparation on Superb. The phones on '3' are unable to switch to rSAP mode and will therefore not work on this system.

## Customer services

### **Talk to us on 08457 745 745**

No matter what the query, our dedicated call centre is always ready to listen. No matter how big or small the request, speak to one of customer care advisors to see if they can help. The call centre is open from 8.30am-6pm. If you're calling out of hours, then a message can be left and you'll be contacted back.

### **Peace of mind with a Škoda warranty**

In the first two years of owning your car, you'll get the peace of mind of a two year unlimited mileage warranty. In addition, you'll also get a further warranty on new vehicles supplied through the appointed dealer network until the vehicle has completed 60,000 miles or the end of the third year, whichever is sooner.

### **A network that's here to help**

With 13 years in the top 5 of JD Power's customer satisfaction survey, our network of approximately 125 retailers knows how to treat a customer. You can be sure that as a Škoda customer, your retailer will look after you from the moment you walk through the door, throughout the life of your Škoda. Your Superb will be serviced and maintained to the highest standards by specially trained Škoda technicians. And when you need a spare part you'll be happy to know that most are held in stock, or can be ordered within 24 hours. So if top class customer satisfaction is what you're after, the Škoda network will be there for you.

### **Motability**

People in receipt of the Higher Mobility Component of the Disability Living Allowance receive special help from Škoda. Preferential prices on low cost Contract Hire are available through your local approved Motability retailer. For full details, contact your retailer.

### **If your Škoda's in trouble, rely on Škoda Assistance**

Completely free of charge, every new Škoda is covered by Škoda Assistance, provided by the RAC through a dedicated team. This cover lasts for 3 years. So if you ever break down, you can use the freephone number to call out someone who really knows about Škoda cars to help. This service is even available in Europe, so you don't need additional breakdown cover when you're driving on the continent.

### **Financing your Škoda**

We all know that times are hard, so Škoda Finance specialises in providing funding solutions for Škoda drivers. Regardless of whether you're a private or business user, you can choose from a range of funding options

#### **Finance products available are:**

- Solution – a personal contract plan
- Hire purchase
- Lease purchase
- Finance lease
- Contract hire

With all Škoda Finance products you can choose a fixed-cost maintenance plan designed to help you budget accurately. No matter what finance product you choose, your local Škoda retailer will be able to provide you with a personalised quote that could meet your budget and vehicle needs. Škoda Finance is a trading name of Volkswagen Financial Services (UK) Limited, Brunswick Court, Yeomans Drive, Blakelands, Milton Keynes MK14 5LR. Registered in England number 2835230.

### **Adding that little extra to your car**

If the standard specification and factory fitted options aren't enough for you, then why not take a look at our range of retailer fitted accessories? A separate accessories brochure can be found at your local retailer, or can be ordered by phoning our call centre, or by going on-line at [www.skoda.co.uk](http://www.skoda.co.uk).

### **Insuring your car through Škoda motor insurance**

When you pick up your car for the first time, there's no need to worry about insurance, because each new Škoda comes with complimentary seven-day cover upon request – we'll email a cover note directly to your Škoda retailer, enabling them to tax your car easily. Taking out an annual policy is easy and it can start when the seven-day cover expires.

For more information contact your local Škoda retailer or call 0800 051 3145 to get a quote or to arrange your complimentary cover for your Škoda.

Škoda Insurance is underwritten and administered by Zurich Insurance Company.

0312 04/09

## Welcome to your Škoda retailer

The information in this brochure referring to specification, design, equipment, material and external appearance relates to the time at which this brochure was printed. Whilst every effort is made to ensure its accuracy, the information in this brochure is not binding and is subject to alteration. Some illustrations in this brochure depict left hand drive models, with both standard and optional equipment shown. Please confirm exact specifications, prices and colour availability with your Škoda retailer who will be notified of any specification changes as they occur.

**Edition:** UK 04/09

**Information:** 08457 745 745

**Internet:** [www.skoda.co.uk](http://www.skoda.co.uk)

**E-mail:** [customerservices@skoda.co.uk](mailto:customerservices@skoda.co.uk)

Retailer's stamp